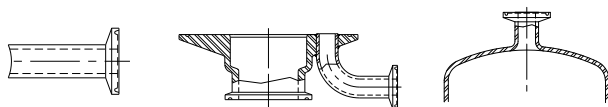


Sanitary (S Series) Vent and Drain Codes

Vent and Drain Codes

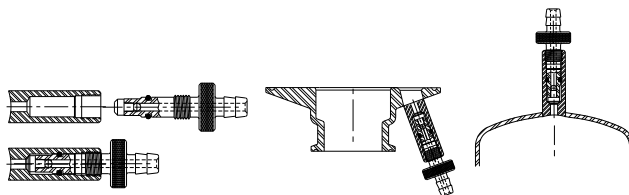
1 (1/2" TriClamp TC):

1/2" TriClamp (TC) fitting is welded directly to housing. (This configuration is standard on Sanitary S Series.)



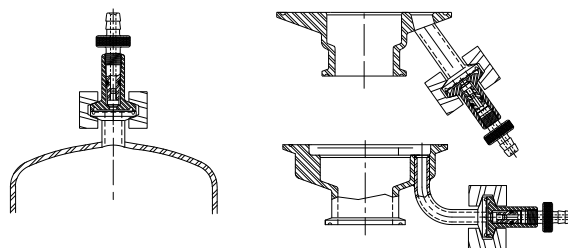
2 Sanitary Valve:

Sanitary valve fitted with a Kynar[®] Seal, Silicone O-ring, and 1/4" barb fitting. Valve screws into a valve stem body that is welded directly to housing.



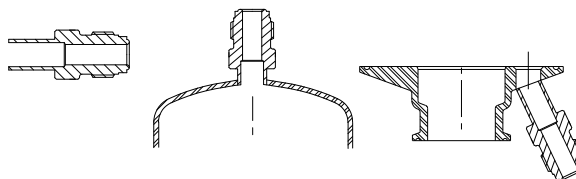
3 Sanitary Valve Clamped:

1/2" clamped flange (TC) fitting is welded directly to housing. A Sanitary Valve is inserted into a 1/2" TC valve stem body and clamped to the 1/2" TC fitting with a 1/2" TC Clamp. A Silicone seal is standard between the 1/2" TC fittings.



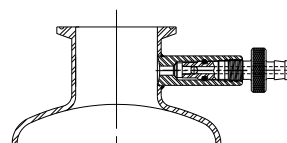
4 3/8" VCR:

3/8" male VCR fitting is welded directly to housing.



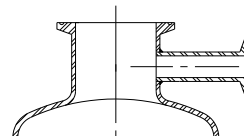
5 1-1/2" TC Gauge Port with Sanitary Valve:

1-1/2" clamped flange (TC) fitting is welded directly to housing with Sanitary Valve and valve stem body assembly welded in a Tee configuration.



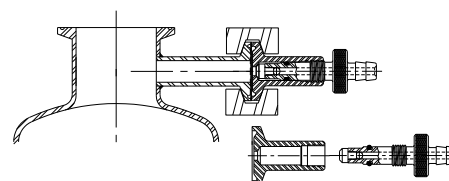
6 1-1/2" TC Gauge Port with 1/2" TC Ferrule:

1-1/2" clamped flange (TC) fitting is welded directly to housing with 1/2" clamped flange (TC) welded in a Tee configuration.



7 1-1/2" TC Gauge Port with Sanitary Valve Clamped:

1-1/2" clamped flange (TC) fitting is welded directly to housing with 1/2" clamped flange TC welded in a Tee configuration. A Sanitary Valve is inserted into a 1/2" TC valve stem body and clamped to the 1/2" TC fitting with a 1/2" TC Clamp. A Silicone seal is standard between the 1/2" TC fittings.



N None:

No Vent and/or Drain.



tel: 860.854.6121
fax: 860.854.6120
email: info@shelco.com
www.shelco.com

100 Bradley Street
Middletown, CT 06457 USA